

I tried to Connect to an FTP which runs on an B&R Programming Logical Controller (PLC).

(1) If i used the Anonymous User to log in, FileZilla successfully connects to the C: Partition on the CF Installed in the PLC. But in this mode i can't change to the F: Partition.

Short-Log:

Befehl: CWD F: -> Antwort:550 Guest access denied.

(2) So i tried to use an Username (User: 1) with the Password (Pass: 1). This results in an Error after successfully requesting the current directory.

Short-Log:

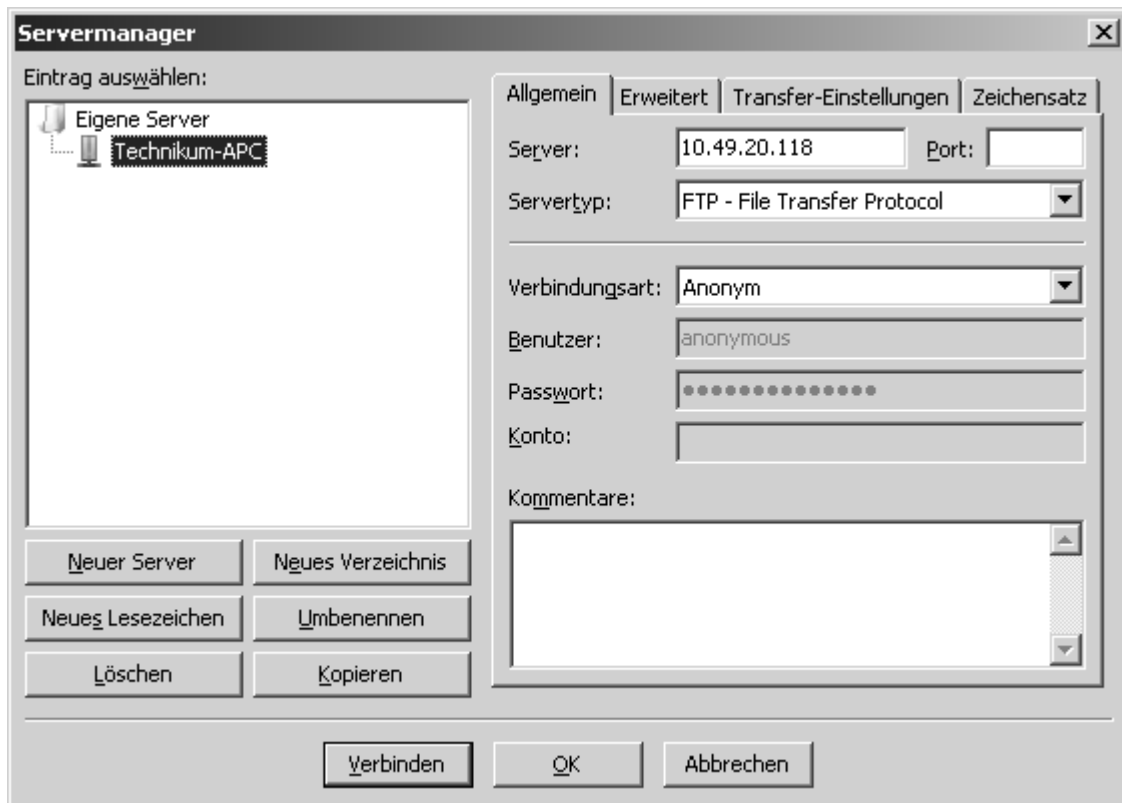
Antwort: 257 Current directory is "C:"

Fehler: Verzeichnisinhalt konnte nicht empfangen werden

(3) If i use WS_FTP the whole thing works, so i thought the Log-File could give you interessting informations ... so i also added it. Connecting with User:1 and Pass:1

Would be happy if i can work with FileZilla in the Future, because of its other functions.

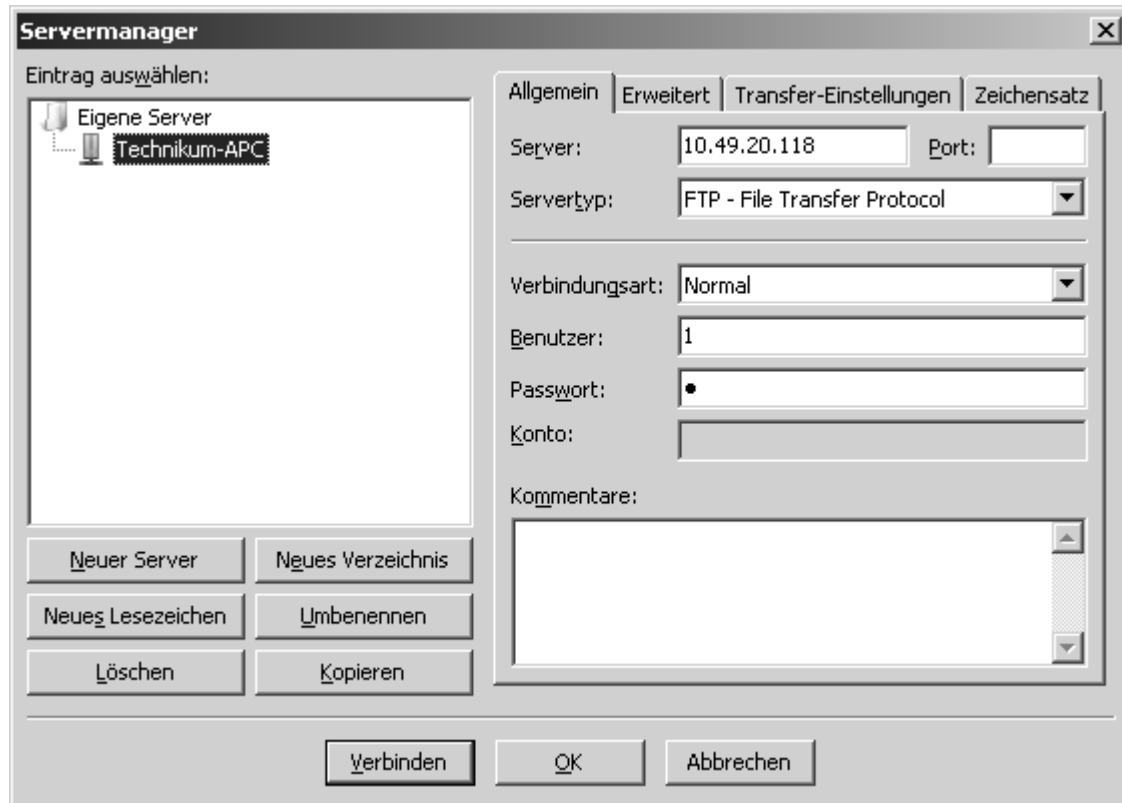
(1)



```
Status: Verbinde mit 10.49.20.118:21...
Status: Verbindung hergestellt, warte auf Willkommensnachricht...
Antwort: 220 VxWorks FTP server (VxWorks 5.4.2) ready.
Befehl: USER anonymous
Antwort: 331 Guest login ok, send your complete e-mail address as password.
Befehl: PASS *****
Antwort: 230 Guest login ok, upload directory is /.
Status: Verbunden
Status: Empfange Verzeichnisinhalt...
Befehl: PWD
Antwort: 257 Current directory is "/"
Befehl: TYPE I
Antwort: 200 Type set to I, binary mode
Befehl: PASV
```

Antwort: 227 Entering Passive Mode (10,49,20,118,4,25)
Befehl: LIST
Antwort: 150 Opening BINARY mode data connection
Antwort: 226 Transfer complete
Status: Anzeigen des Verzeichnisinhalts abgeschlossen

(2)

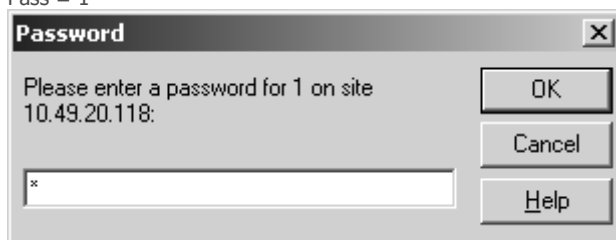


Status: Verbindung zum Server getrennt
Status: Verbinde mit 10.49.20.118:21...
Status: Verbindung hergestellt, warte auf Willkommensnachricht...
Antwort: 220 VxWorks FTP server (VxWorks 5.4.2) ready.
Befehl: USER 1
Antwort: 331 Password required
Befehl: PASS *
Antwort: 230 User logged in
Status: Verbunden
Status: Empfange Verzeichnisinhalt...
Befehl: PWD
Antwort: 257 Current directory is "C:"
Fehler: Verzeichnisinhalt konnte nicht empfangen werden

(3)



Pass = 1



WINSOCK.DLL: WinSock 2.0

WS_FTP LE 5.08 2000.01.13, Copyright © 1992-2000 Ipswitch, Inc.

--

connecting to 10.49.20.118:21

Connected to 10.49.20.118 port 21

220 VxWorks FTP server (VxWorks 5.4.2) ready.

USER 1

331 Password required

PASS (hidden)

230 User logged in

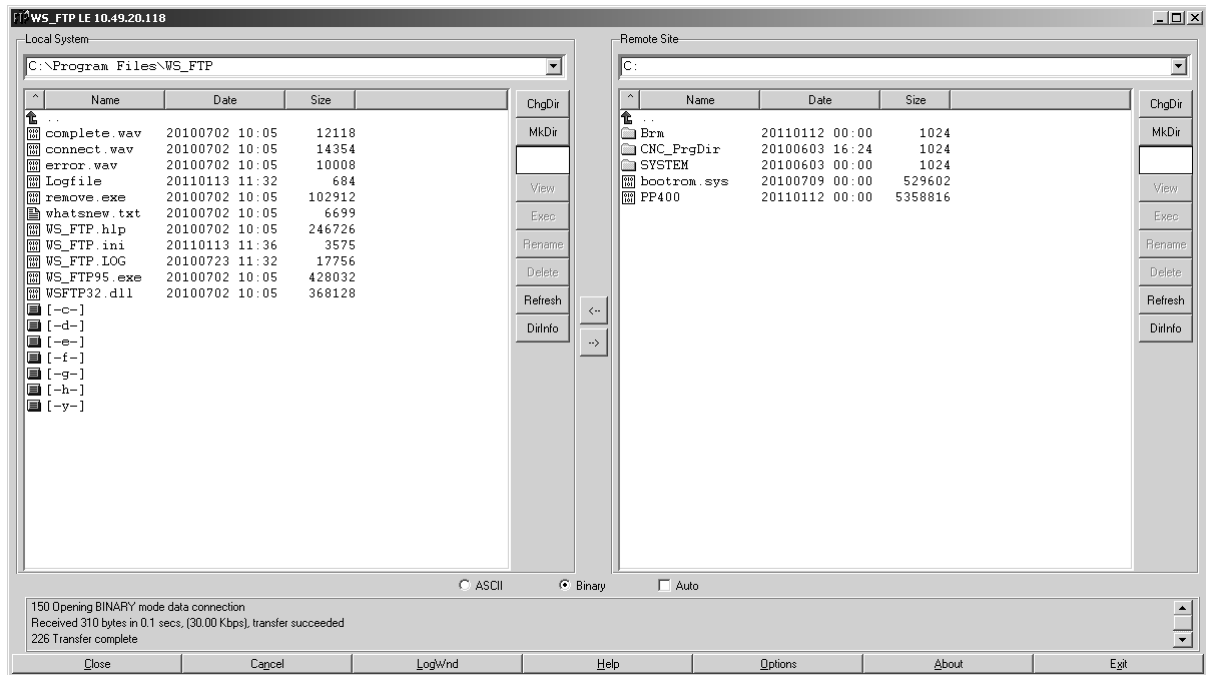
PWD
257 Current directory is "C:"
SYST
215 UNIX Type: L8 Version: VxWorks
Host type (S): UNIX (standard)
PASV
227 Entering Passive Mode (10,49,20,118,4,29)
connecting to 10.49.20.118:1053
- -
connecting to 10.49.20.118:1053
Connected to 10.49.20.118 port 1053
LIST
150 Opening BINARY mode data connection
Received 310 bytes in 0.1 secs, (30.00 Kbps), transfer succeeded
226 Transfer complete

View C occurs after that i changed the Directory

CWD F:
250 Changed directory to "F:"
PWD
257 Current directory is "F:"
PASV
227 Entering Passive Mode (10,49,20,118,4,30)
connecting to 10.49.20.118:1054
- -
connecting to 10.49.20.118:1054
Connected to 10.49.20.118 port 1054
LIST
150 Opening BINARY mode data connection
Received 65 bytes in 0.1 secs, (6500.00 bps), transfer succeeded
226 Transfer complete

View of Path F: Occured

View of Path C:



View of Path F:

